

# FRIENDS OF COULTERSHAW NEWSLETTER No 22 JUNE 2019



## Trustees

Robin Wilson has given notice of his wish to retire after the AGM in November. Barry Flannaghan has been appointed a Trustee and has accepted the Trustees' invitation to take over as Chairman of the Trust on Robin's retirement.

Barry is the owner of the Burton Mill and has overseen the restoration of the mill and turbine. He is a retired electronics engineer and a member of the Sussex Industrial Archaeology Society.

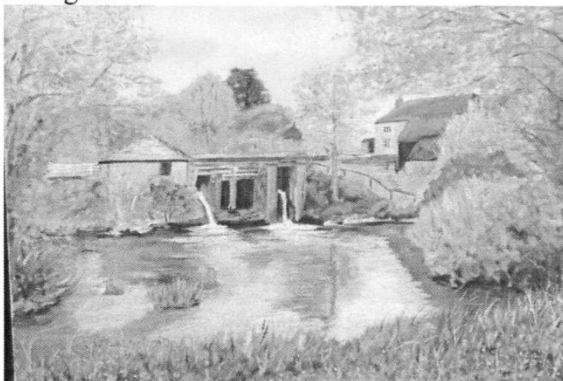
## Urgent Need for Volunteer Stewards

The Coultershaw Heritage Site depends on the work of volunteers. Although the Site is well supported by volunteers with engineering skills, there is a serious shortage of volunteers to act as Stewards on Open Days, manning the desk and showing visitors round. Without more Stewards, there is a risk that the Site will be unable to open as advertised.

The Site opens on the first and third Sunday in the month plus Bank Holiday Mondays from April to September. If you have an interest in Petworth's history, and could spare half a day, or a whole day, to meet and greet our visitors, contact Robin Wilson [rlw774@gmail.com](mailto:rlw774@gmail.com).

## Satisfactory Start to Year

Visitor numbers are about the same as last year, but with more children. Two schools days are planned and a working party from Seaford College. The Petworth Community Craft Group and the Arun & Rother Rivers Trust continue to be regular users of the Warehouse. Visitors include members of local Art Groups. The Trust has acquired this view of the Mill Pond painted by Edmund Warwick Gee of Tillington



## Tuesday Gang

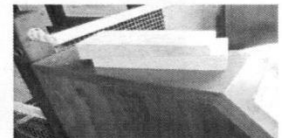
The Tuesday Gang continues with working parties on Tuesday mornings undertaking various maintenance and restoration tasks. In addition to the usual replacement of worn out paddles, boards and starts, a new penstock gate has been made and re-seated. The running of the waterwheel has been intermittent, due to movement of the riverside spider along the shaft.



Spider held by wedges on to hexagon, keyed to shaft.



Worn Metal Key



New wedges (green oak)

New wooden wedges have been fitted to hold the spider onto the hexagon; the metal key holding the hexagon onto the shaft is to be re-placed.

Nick Harper who lives in Petworth has recently joined the gang, and is already Stewarding on Open Days.

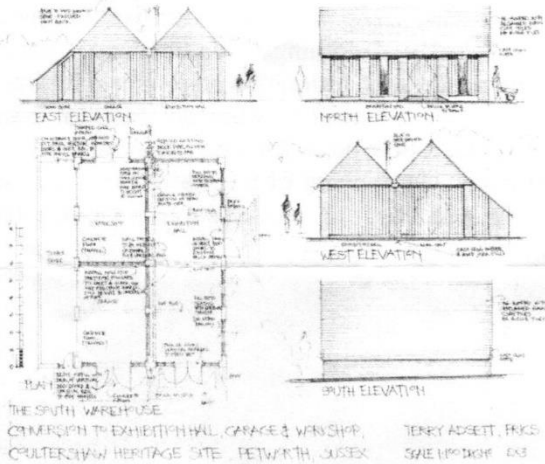


Other tasks completed include the restoration of the scales from the old Station coal yard and the fitting of a gate in the pipe rail fence at the Engine House.

## South Warehouse

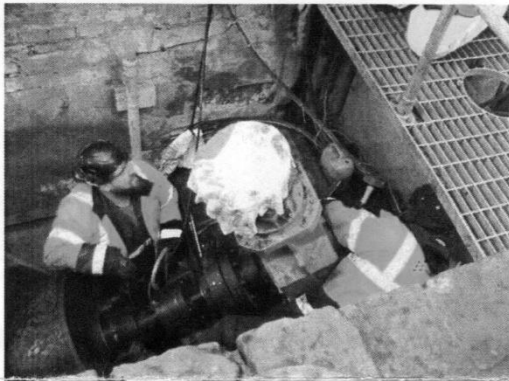
The Trust developed proposals for the restoration of the South Warehouse as an Exhibition Centre and Learning Space and submitted applications for grants from the Heritage Lottery Fund and the South Downs National Park Authority.

Sadly both the applications were unsuccessful and the Project is now on hold

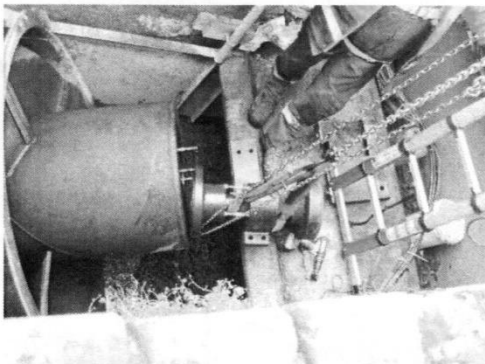


## Turbine

The upper bearing was replaced (for the third

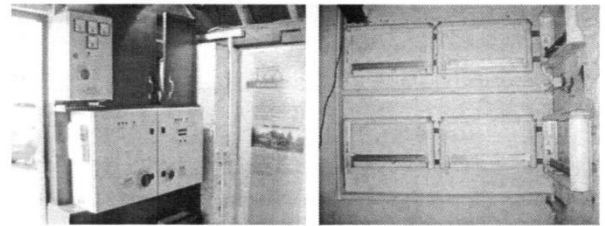


time) on 2 April 2019. An electrical fault was repaired on 16 April when generation was resumed after a stoppage of 30 weeks.



Current load factor load factor 85%.

The electro-mechanical brake is now being replaced by a load bank of six 3kW heaters.



Switch gear for load bank

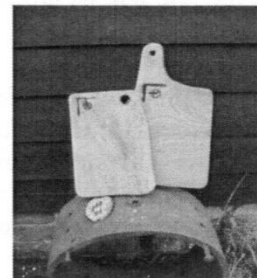
Load bank heaters

## Considerate Neighbour Policy

The Trust shares with neighbours the right of way along the Private Road from the A283 to the builders' yard. The Trust respects the privacy of its neighbours and seeks to mitigate any nuisance which may be caused by the use of the Private Road. Visitors driving down the Private Road are asked to drive carefully and leave quietly.

## Evening Party 10 July 2019

Friends, Volunteers and all other supporters are invited to enjoy a fine evening on Wednesday 10 July with a glass of wine, view the Heritage Site and win a prize in the raffle.



Raffle prizes include oak chopping boards made from off cuts from new paddles for the waterwheel.

**RSVP on the attached card or email**

**acceptance to**

**Robin Wilson <rlw774@gmail.com>**